

LOW CROPS



ALBUZ

catalog 2024

Specific body dimensions: 8 mm

ISO

Drift reduction flat spray nozzle

ADI 110°



ISO colour code

SPECIFIC CHARACTERISTICS

- > Flow rate characteristics, body size and colour code meet international ISO standard.
- > Drift reduction nozzle reduces by 50% the number of small droplets (<100µm).
- > Easy to dismantle and clean.
- > **Minimum height boom recommended: 50/60 cm.**
- > **Recommended pressure: 2 bar.**



Easy to dismantle and clean

MAIN CHARACTERISTICS

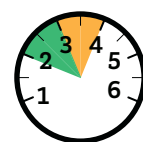
- > Pink ALBUZ® ceramic orifice (excellent precision and high wear resistance).
- > Flat fan pattern angle 110°: spray overlap required to ensure uniform distribution on the ground.
- > Designed for all types of nozzle holders with caps which accept nozzles to ISO dimensions (8 mm across flats).
- > Drift reduction.

FLOW RATE CHART

| Colour | ISO CODE | Mesh | (bar) | l/min | Liters / hectare - Nozzle spacing: 50 cm | | | | | | | | | | | | |
|--------|------------|------|-------|-------|--|--------|--------|--------|---------|---------|---------|---------|---------|---------|---------|---------|----|
| | | | | | 6 km/h | 7 km/h | 8 km/h | 9 km/h | 10 km/h | 12 km/h | 14 km/h | 16 km/h | 18 km/h | 20 km/h | 22 km/h | 24 km/h | |
| ORANGE | ADI 11001 | 100 | 2 | M | 0,32 | 64 | 55 | 48 | 43 | 38 | 32 | 27 | 24 | 21 | 19 | 18 | 17 |
| | | | 2,5 | M | 0,36 | 72 | 62 | 54 | 48 | 43 | 36 | 31 | 27 | 24 | 22 | 20 | 19 |
| | | | 3 | M | 0,40 | 80 | 69 | 60 | 53 | 48 | 40 | 34 | 30 | 27 | 24 | 22 | 20 |
| | | | 3,5 | F | 0,43 | 86 | 74 | 65 | 57 | 52 | 43 | 37 | 32 | 29 | 26 | 23 | 22 |
| | | | 4 | F | 0,46 | 92 | 79 | 69 | 61 | 55 | 46 | 39 | 35 | 31 | 28 | 25 | 23 |
| GREEN | ADI 110015 | 100 | 2 | M | 0,49 | 98 | 84 | 74 | 65 | 59 | 49 | 42 | 37 | 33 | 29 | 27 | 25 |
| | | | 2,5 | M | 0,54 | 108 | 93 | 81 | 72 | 65 | 54 | 46 | 41 | 36 | 32 | 30 | 28 |
| | | | 3 | F | 0,60 | 120 | 103 | 90 | 80 | 72 | 60 | 51 | 45 | 40 | 36 | 33 | 30 |
| | | | 3,5 | F | 0,64 | 128 | 110 | 96 | 85 | 77 | 64 | 55 | 48 | 43 | 38 | 35 | 33 |
| | | | 4 | F | 0,69 | 138 | 118 | 104 | 92 | 83 | 69 | 59 | 52 | 46 | 41 | 38 | 35 |
| YELLOW | ADI 11002 | 100 | 2 | M | 0,66 | 132 | 113 | 99 | 88 | 79 | 66 | 57 | 50 | 44 | 40 | 35 | 33 |
| | | | 2,5 | M | 0,73 | 146 | 125 | 110 | 97 | 88 | 73 | 63 | 55 | 49 | 44 | 40 | 37 |
| | | | 3 | F | 0,80 | 160 | 137 | 120 | 107 | 96 | 80 | 69 | 60 | 53 | 48 | 44 | 40 |
| | | | 3,5 | F | 0,86 | 172 | 147 | 129 | 115 | 103 | 86 | 74 | 65 | 57 | 52 | 47 | 43 |
| | | | 4 | F | 0,91 | 182 | 156 | 137 | 121 | 109 | 91 | 78 | 68 | 61 | 55 | 50 | 46 |
| PURPLE | ADI 110025 | 50 | 2 | M | 0,82 | 164 | 141 | 123 | 109 | 98 | 82 | 70 | 62 | 55 | 49 | 45 | 41 |
| | | | 2,5 | M | 0,91 | 182 | 156 | 137 | 121 | 109 | 91 | 78 | 68 | 61 | 55 | 50 | 46 |
| | | | 3 | F | 1,00 | 200 | 171 | 150 | 133 | 120 | 100 | 86 | 75 | 67 | 60 | 55 | 50 |
| | | | 3,5 | F | 1,08 | 216 | 185 | 162 | 144 | 130 | 108 | 93 | 81 | 72 | 65 | 59 | 54 |
| | | | 4 | F | 1,15 | 230 | 197 | 173 | 153 | 138 | 115 | 99 | 86 | 77 | 69 | 63 | 58 |
| BLUE | ADI 11003 | 50 | 2 | C | 0,98 | 196 | 168 | 147 | 131 | 118 | 98 | 84 | 74 | 65 | 59 | 53 | 49 |
| | | | 2,5 | M | 1,10 | 220 | 189 | 165 | 147 | 132 | 110 | 94 | 83 | 73 | 66 | 60 | 55 |
| | | | 3 | M | 1,20 | 240 | 206 | 180 | 160 | 144 | 120 | 103 | 90 | 80 | 72 | 65 | 60 |
| | | | 3,5 | M | 1,30 | 260 | 223 | 195 | 173 | 156 | 130 | 111 | 98 | 87 | 78 | 71 | 65 |
| | | | 4 | M | 1,39 | 278 | 238 | 209 | 185 | 167 | 139 | 119 | 104 | 93 | 83 | 76 | 70 |
| RED | ADI 11004 | 50 | 2 | C | 1,31 | 262 | 225 | 197 | 175 | 157 | 131 | 112 | 98 | 87 | 79 | 71 | 66 |
| | | | 2,5 | M | 1,46 | 292 | 250 | 219 | 195 | 175 | 146 | 125 | 110 | 97 | 88 | 80 | 73 |
| | | | 3 | M | 1,60 | 320 | 274 | 240 | 213 | 192 | 160 | 137 | 120 | 107 | 96 | 87 | 80 |
| | | | 3,5 | M | 1,73 | 346 | 297 | 260 | 231 | 208 | 173 | 148 | 130 | 115 | 104 | 94 | 87 |
| | | | 4 | M | 1,85 | 370 | 317 | 278 | 247 | 222 | 185 | 159 | 139 | 123 | 111 | 101 | 93 |

APPLICATIONS

All types of treatments (herbicides, fungicides, insecticides...).



2-4 bar



110°

